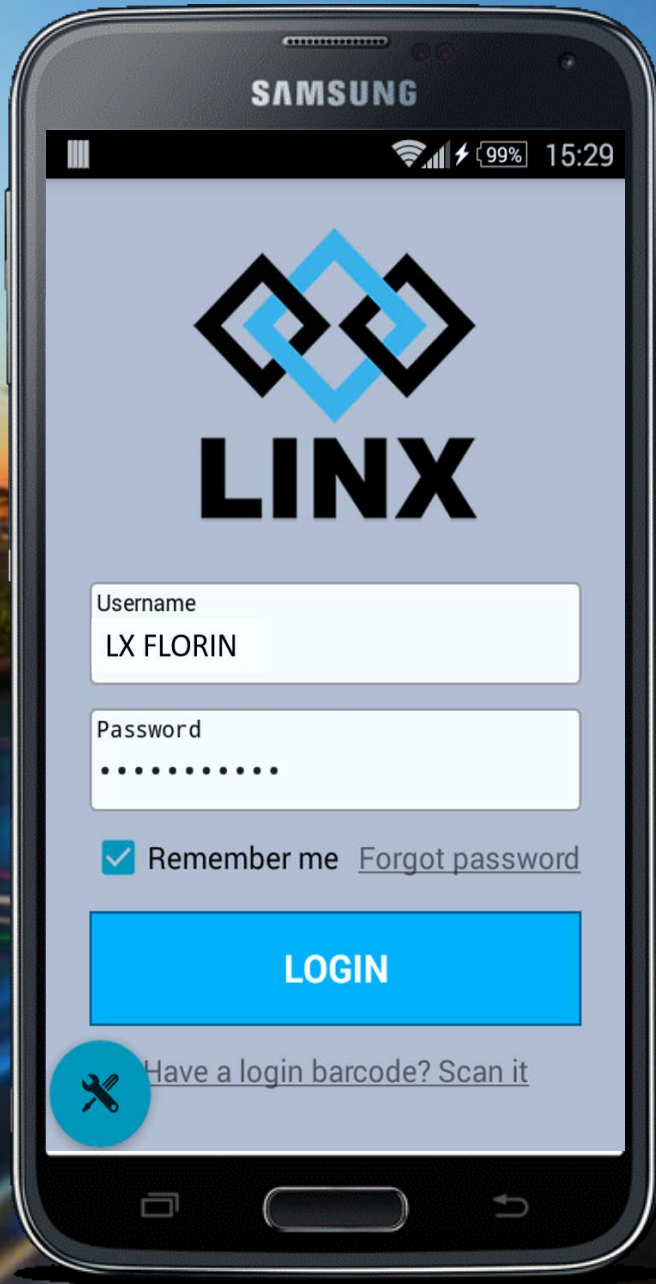


LINX

Unified Communication Solution Overview



safemobile

INTRODUCING LINX



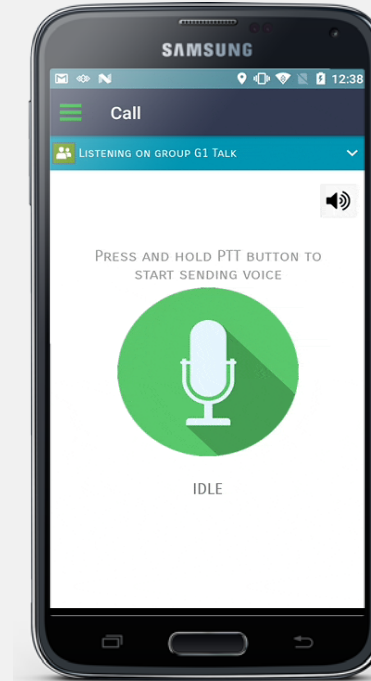
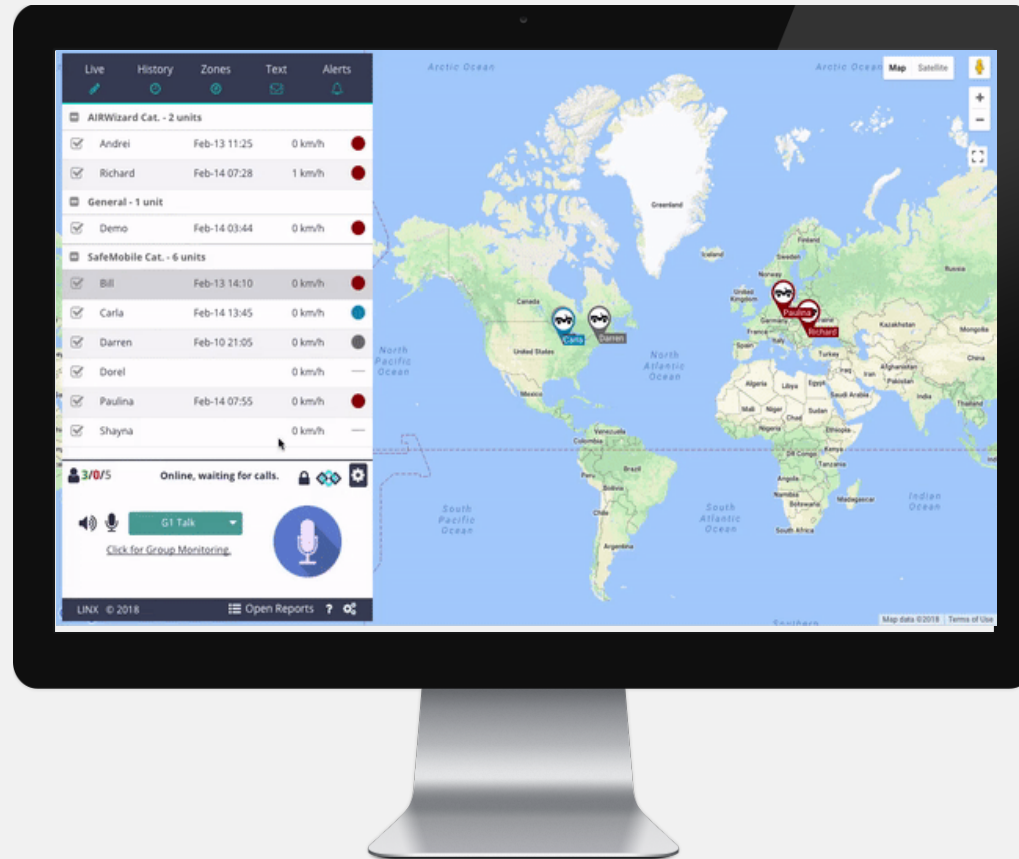
About LINX

LINX is a broadband application that simplifies multiple communication technologies such as Push-To-Talk, GPS Tracking, Security Alarms and Instant Messaging into a single real-time solution for purpose-built, ruggedized mobile devices.

safemobile



Everything you need to get the job done, all in one.



Desktop Dashboard

Database, web server, administrative module, gateway and dispatch server all integrated into one easy-to-use system with a live monitoring dashboard interface and analytical reporting



Voice and Data Application

Push-to-Talk, Live Presence and GPS tracking with Geo-Fences and Landmarks, Instant Messaging, Security Features and Emergency Alarms.



Purpose-Built Hardware

Ruggedized devices and accessories built for field use. IP-68 rated, water proof, dust proof, heat proof, drop proof, shatter proof, extra loud audio

SEAMLESS, UNIFIED COMMUNICATION

Key Solution Features:

Voice & Data Application

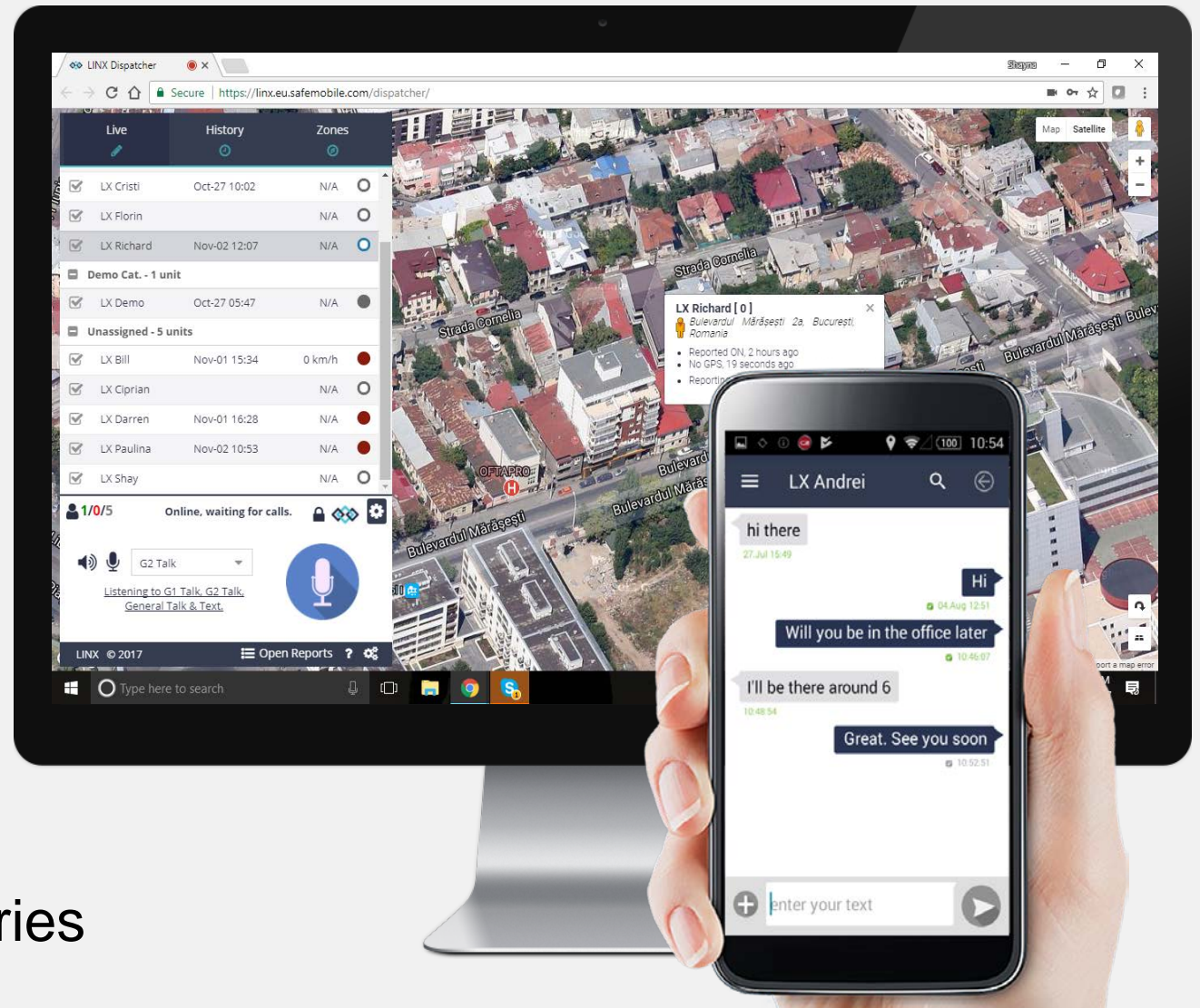
- Instant Push-To-Talk
- Live Presence Notifications
- GPS Tracking
- Text Messaging
- Data & Image File Transfer
- Security Features & Alarms

Desktop Dashboard

- Analytics
- Reporting

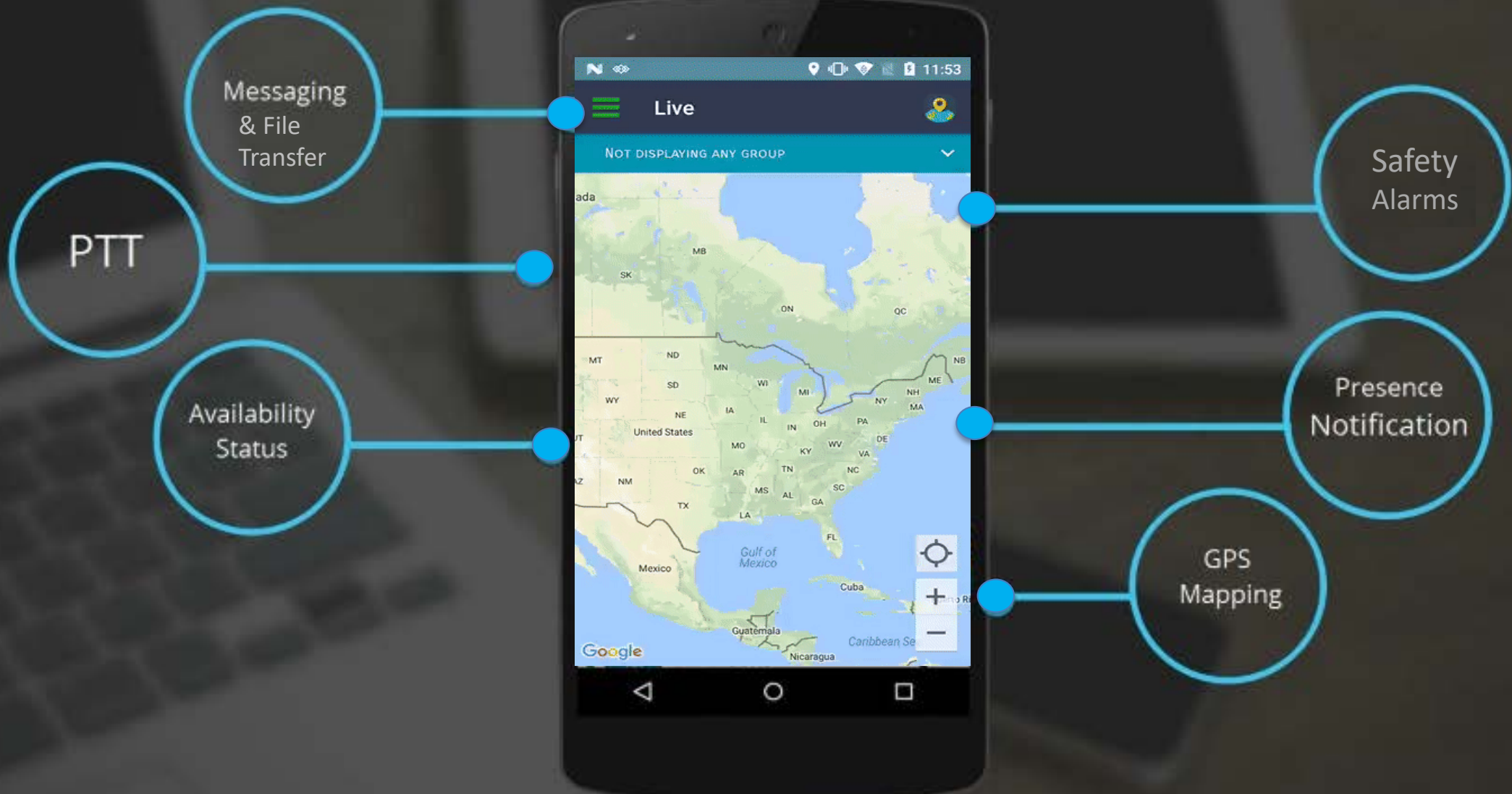
Purpose-Built Hardware

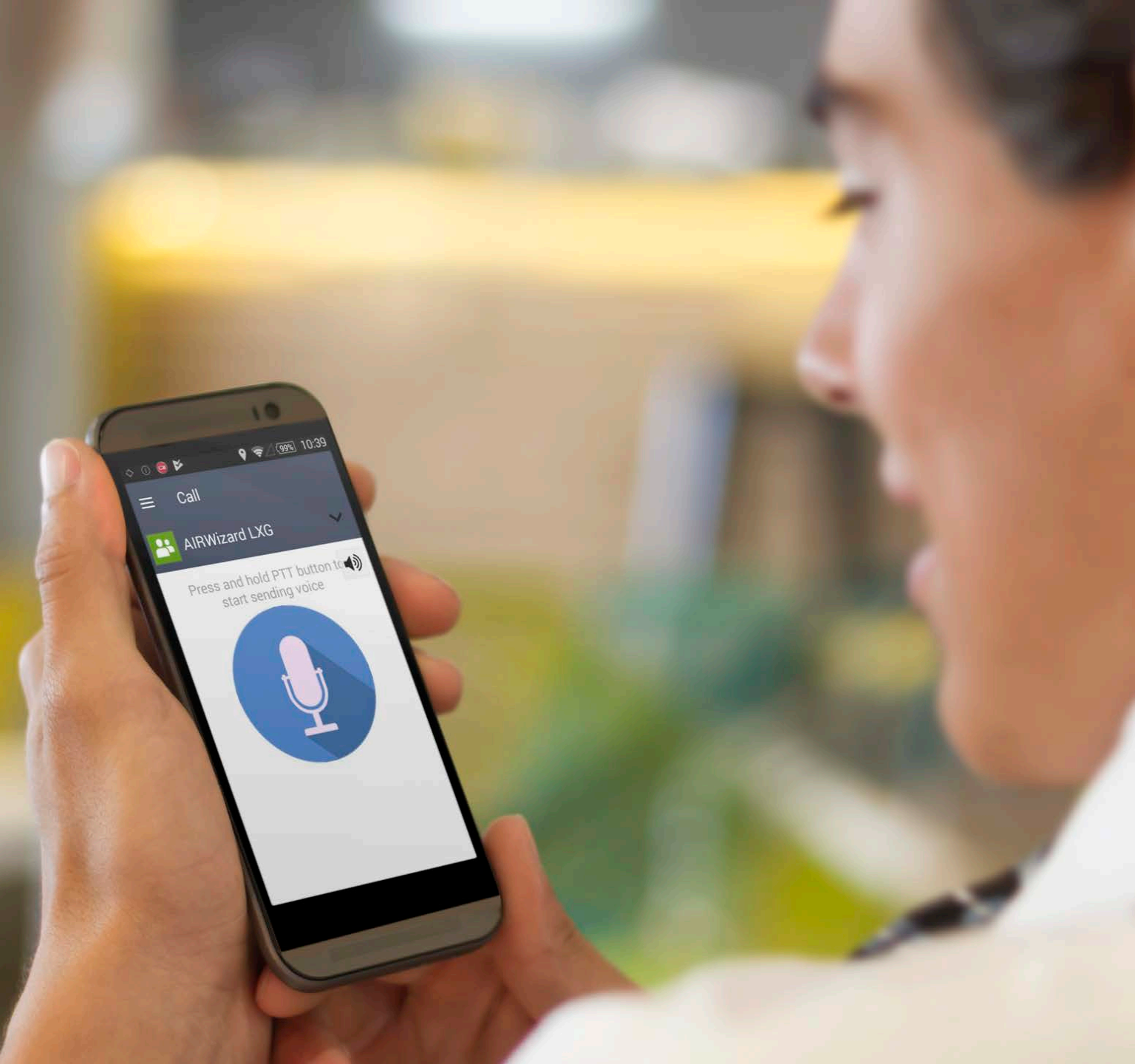
- Ruggedized Devices & Accessories



LINX Live

Turn your mobile device into an all-in-one tool





Max # of users
Unlimited



PTT
SMS & File Transfer



Call History
Call Recording



Emergency Alarms
Man Down



LINX GPS Tracking



Instantly see users' current status and whereabouts



Check their route history



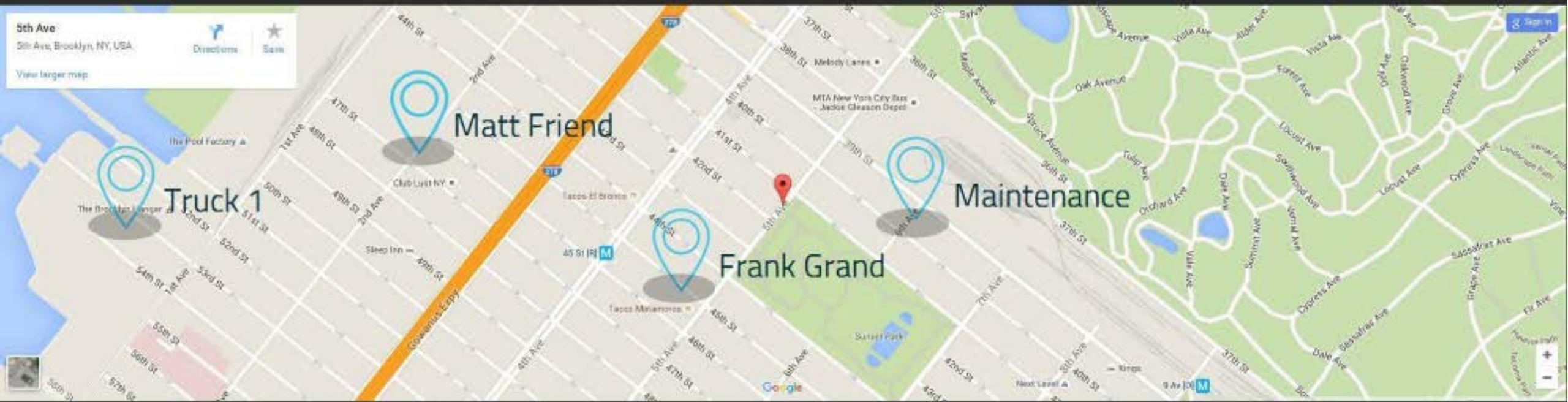
Availability notifications



Unit polling



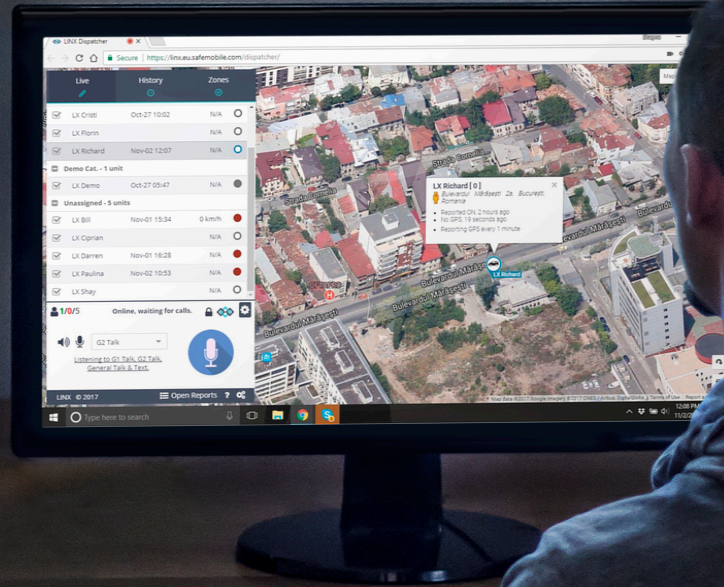
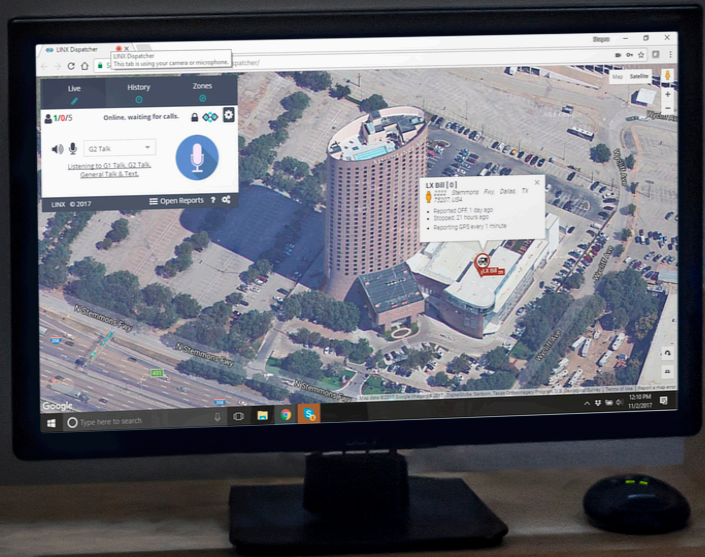
Access all data directly from your LINX Control Panel





Text Messaging

SMS and instant messaging between users and dispatch is another essential tool within LINX to help you get the job done.



The LINX Dispatch Console displays, collects and stores your calls, recordings, GPS history and data conveniently on your network.

Network Requirements

Dual-Band-Capable, 2.4 GHz and 5 GHz Network Bandwidth

Configurable multiple APs for Fast Roaming (802.11r & 802.11k) & Secure Guest Network Features

Omni-Directional and Multi-Floor Penetration

High-Performance & Expanded User Capacity at Increased Ranges





System Requirements

Application Server PC

Requirement	Description
Operating System (s)	Windows 7 PRO, No Media, 64-bit, English
Processors	3rd Gen Intel® Core i7-3770 (Quad Core, 3.40GHz, 8MB w/HD4000 Graphics)
Memory	8GB, NON-ECC, 1600 MHZ DDR3, 2DIMM
Removable Media Storage Device	16X DVD +/- RW SATA
Boot Hard Drives	1TB 3.5" SATA 6Gb/s with 32 MB Databurst Cache
Graphics Cards	1GB AMD RADEON HD 7470, FH, w/VGA
System Recovery	Recovery Media for Windows 7 Ultimate, SP1, 64bit, Multiple Language
Power Supply	OptiPlex 7010 MT Standard PSU
Low Power Mode	1 Watt ready low-power mode

Dispatcher PC

Requirement	Description
Operating System (s)	Windows 7 PRO, No Media, 64-bit, English
Processors	3rd Gen Intel® Core i5-3570 (Quad Core, 3.40GHz, 6MB w/HD2500 Graphics)
Memory	6GB, NON-ECC, 1600 MHZ DDR3, 2DIMM
Removable Media Storage Device	16X DVD +/- RW SATA
Boot Hard Drives	1TB 3.5" SATA 6Gb/s with 32 MB Databurst Cache
Graphics Cards	Intel Integrated Graphics. W/O
System Recovery	Recovery Media for Windows 7 Ultimate, SP1, 64bit, Multiple Language
Power Supply	OptiPlex 7010 Desktop w/Standard Power Supply
Low Power Mode	1 Watt ready low-power mode



Business Critical Solutions For Every Market

Why is LINX the Solution For You?

- You can do more, with less!
- Communicate and coordinate in real-time using one solution to save time & money
- Perfect for any size team, organization, or environment





THINK OF YOUR DAILY OPERATIONS...

HOW DO YOU CONNECT?

safemobile

LINX Transforms How Your Business Operates

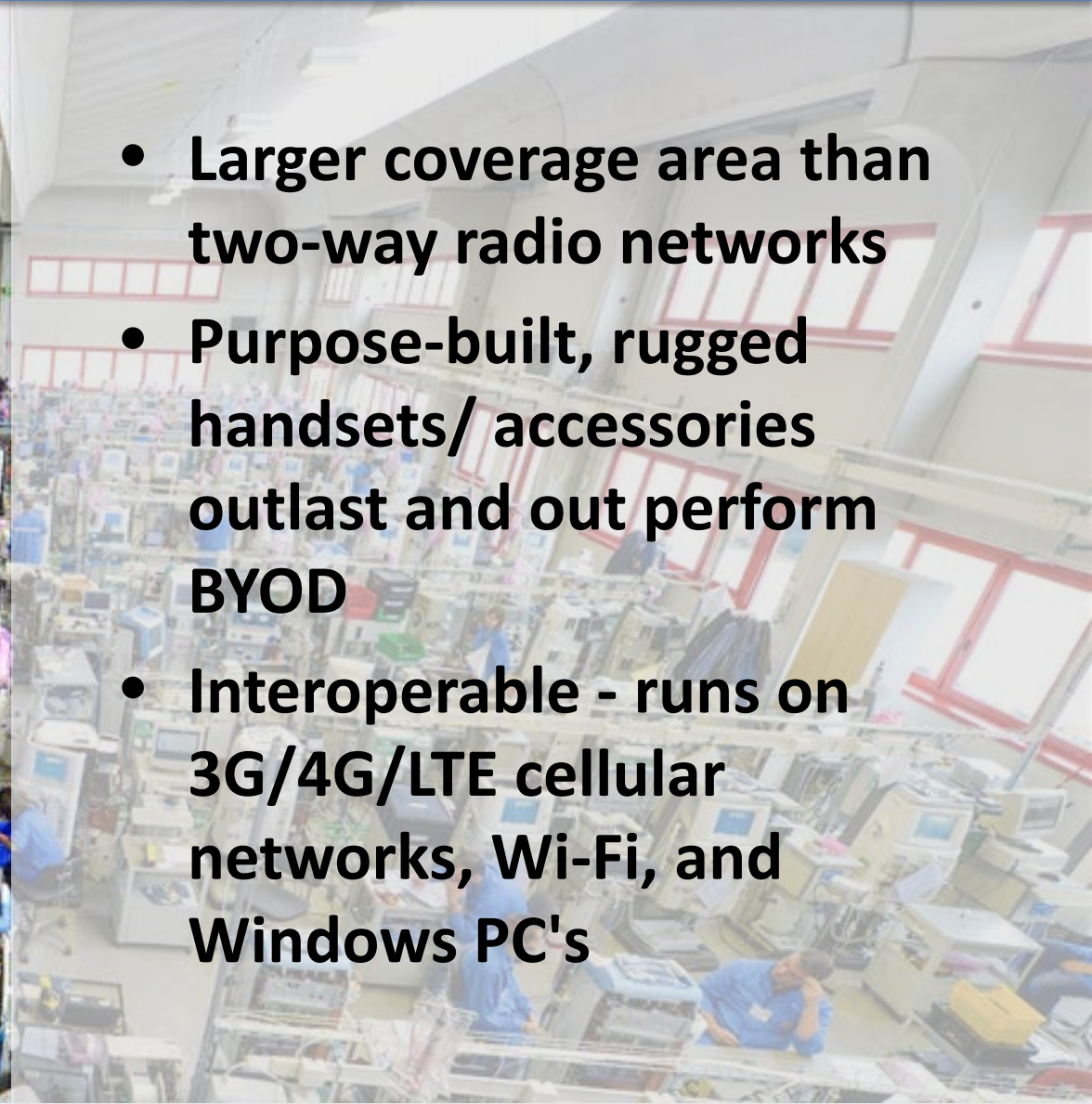
- Converse quickly and safely with a large team or fleet at once
- Seamless communication between colleagues
- Connect faster than with traditional GSM calls




LINX Transforms How Your Business Operates



- Larger coverage area than two-way radio networks
- Purpose-built, rugged handsets/ accessories outlast and out perform BYOD
- Interoperable - runs on 3G/4G/LTE cellular networks, Wi-Fi, and Windows PC's



LINX Transforms How Your Business Operates

- 
- **Communicate in real-time to proactively address business issues**
 - **Deploy across entire facility, tie together every department into talk groups**
 - **PC-based live dispatch system to manage and track resource distribution**

LINX Transforms How Your Business Operates

- Optimize daily processes to improve performance while reducing operational costs
- Ensure worker safety through remote monitoring and emergency alarms
- Effectively track movement of your people and products



LINX for Transportation & Logistics

Reduce costs associated with fuel, maintenance, over-time pay, and insurance premiums by ensuring that all areas of transportation operations do their jobs safely and most efficiently.

Who Would Use LINX?

- Field Support Staff
- Fleet Teams
- Delivery Drivers
- Dispatch Operators
- Coordinators
- Maintenance Crews
- Dock Teams / Logistics
- Fulfillment/ Warehouse
- Customer Service
- Management

What Benefits Does LINX Provide?

- Instant Communication Between Departments
 - Personnel Safety
 - Asset Management – track your goods
 - Real-Time Status Updates From the Field
 - Field Worker Locating and Monitoring
 - Assigning Jobs and Personnel Using GPS Location Data
 - Route Optimization
 - Observe Driver Habits and Regulation Compliance
 - Delivery Monitoring
 - Proof of Service
- ...and more

LINX for Hospitality & Security

Always on, real-time communication is critical to enhancing a guest's experience, boosting employee productivity, and resolving business or customer issues in the guest service and safety industries.

Who Would Use LINX?

- Front Desk
- Concierge
- Bell Stand
- Parking Valets
- Event Coordinators
- Maintenance/ Grounds Crews
- Housekeeping
- Shipping / Receiving
- Customer Service
- Management
- On-Site Restaurants
- Safety & Security Teams
- Room Service/ Catering
- Shuttles / Transportation

What Benefits Does LINX Provide?

- Quickly Communicate With All Departments
- Personnel Safety
- Situation Awareness
- Real-Time Status
- Worker Location and Monitoring
- Assigning Jobs and Personnel
- Replaces Internal Paging Systems
- Security Alerts
- Delivery and Customer Service Reporting
- Shuttle Dispatch
- Car parking/ retrieval
- Guestroom Status
- Event Coordination
- WIFI Indoor coverage saves \$

LINX for Manufacturing & Warehousing

Coordinating manufacturing requests across a variety of tethered and mobile workers requires the ability to seamlessly communicate about task planning, work orders, production status, inventory, and quality control.

Who Would Use LINX?

- Field Services
- Maintenance Technicians
- Quality Control
- Inventory
- Pickers/ Packers
- Stock Room
- Shipping & Receiving
- Order Fulfillment
- Material Handlers
- Assembly Lines
- Machine Operators
- Supervisors
- Management

What Benefits Does LINX Provide?

- One-button Push-To-Talk
 - Personnel Safety
 - Asset Management – track your goods
 - Real-Time Production Status Updates
 - Worker Locating and Monitoring
 - Assigning Jobs and Personnel Using GPS Location Data
 - Task Planning Communication
 - Inter-departmental Connectivity
 - WiFi in-building coverage saves \$
- ...and more

LINX for Energy, Oil, and Gas

Sharing, capturing, and transferring key information in environmentally volatile and operationally hazardous environments is essential.

Who Would Use LINX?

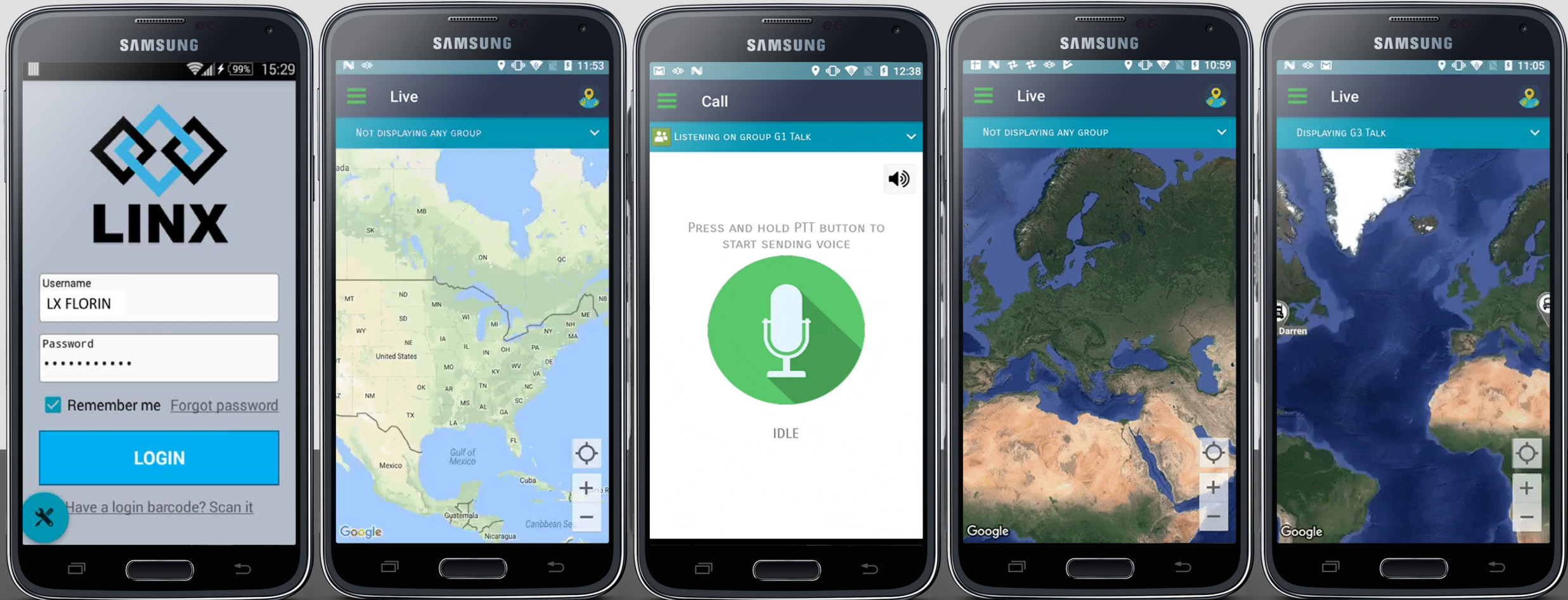
- Field Personnel
- Supervisors
- Emergency Response
- Project Managers
- Coordinators
- Maintenance Crews
- Engineers
- Facilities Managers
- Machine / Tool Operators
- Drivers
- Dispatchers
- Office Employees

What Benefits Does LINX Provide?

- Cross-Functional Instant Communication
- Personnel Safety – Emergency Monitoring
- Field and Site Updates
- Field Worker Locating and Monitoring
- Assigning Work via Messaging
- Location Awareness Using GPS Location Data
- ATEX Safe Equipment & Accessories

...and more

LINX – A UNIFIED COMMUNICATION SOLUTION



Every tool you need, all on one device.

GET MORE INFORMATION



Phone: +1 847-818-1649

3601 E. Algonquin Road.

Suite 800

Rolling Meadows, IL 60008

Email: sales@safemobile.com

www.safemobile.com

www.linxptt.com

THANK YOU!

